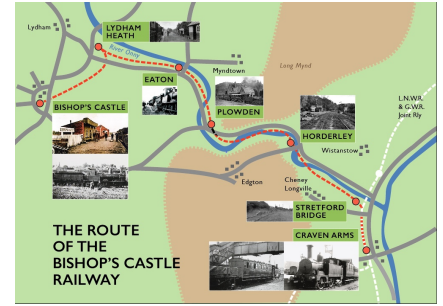


The Monthly Newsletter of
The Bishop`s Castle Railway Society



Weighbridge Railway Museum

Station Street, Bishop`s Castle, SY9 5AQ

Open on

Easter Saturday 16th April

10am—4pm

Bishop`s Castle Railway
Station oo gauge layout
Work so far including kit built Rolling Stock



Second hand
Railway
Books
in the
Banana Van
Book Store
All £2 each

Sale of OO gauge Locos & Coaches

Boxed
as New
Hornby
Lima
Airfix



**Hot Drinks
& Home made Cake**



Southern Locomotives Ltd Past, Present and Future

Friday 29th April 2022

7pm for 7.30pm start

A Zoom presentation by Nick Thompson

shown simultaneously at The Church Barn, Bishop`s Castle, SY9 5AY
and available to log on at home.

Members ~ will be sent the free link in early April

Non Members ~ £3.00 for payment and link contact David O`Neill

bcrscontact@gmail.com from 4th April

WEIGHBRIDGE RAILWAY MUSEUM

These photographs tell the story of the recent very successful Bishop's Castle Arts Festival open day.



The weather was very favourable for late February and visitors were able to enjoy hot drinks and homemade cake in the spring sunshine. The newly created seating area to the side of the building was very popular, as were the wooden planters made by member Malcolm Reeves and planted with shrubs and spring flowers.

Malcolm's sign writing demonstration attracted a lot of attention as he maintained a steady hand whilst talking to visitors.

The completed replica station sign has been erected in a temporary position until the landscaping has been completed. (Photo above)

A very enjoyable day with a healthy sum of money achieved for Society funds.



BCRSMG UPDATE

The Modelling Group continues to meet at the weighbridge fortnightly on Wednesday afternoons, the next meeting being March 16th at 2pm.

The construction of the 00 gauge model of Bishop's Castle station complex is proceeding apace:-

Roger Dalton has completed the main baseboards, constructed with plywood for lightness to enable the finished layout to be transported to exhibitions.

Jonathan Moor's models of the station building, the goods shed, the carriage shed, the engine shed, the weighbridge, the coaling stage and various huts have been used to determine the position of the tracks within the station complex.

Various items of rolling stock are complete or under construction, including 'Carlisle' itself.



At the next meeting a start will be made on laying the cork underlay for the track base.

Also the track work will have been ordered and may have arrived before the next meeting.

The partially completed layout was displayed at the weighbridge on the Saturday of the Bishop's Castle Arts Festival. It attracted a lot of interest from young and old alike. (See the photo right from the front page of the March 4th South Shropshire Journal)

Any one interested in joining the group can contact Stuart Taylor at: satalt17@gmail.com



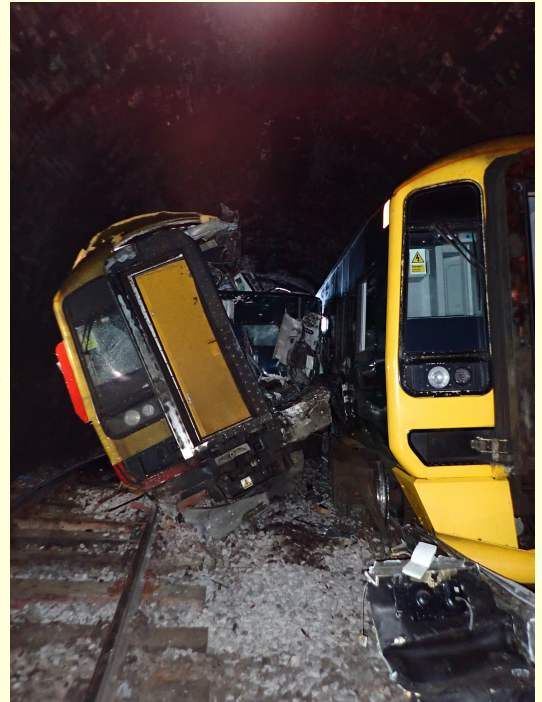
David Hemsley, of Bishop's Castle Railway Society Model Group, with Shane Morris and Jacob Orme-Campbell

Mike Boyd shares another interesting report with us

Recent Rail Accident Board Report into the collision near Salisbury, October 2021.

The purpose of an RAIB investigation is to improve safety by preventing future railway and tramway accidents or by mitigating their consequences. It is not the purpose of such an investigation to establish blame or liability. Accordingly, it is inappropriate that RAIB reports should be used to assign fault or blame, or determine liability, since neither the investigation nor the reporting process has been undertaken for that purpose.

Photo right: The scene inside the tunnel, showing the third coach of train 1F30 (right) and the leading coach of train 1L53 (left). Parts of the driving cab of train 1L53 have been cut away by the emergency services to release the trapped driver



The Parties involved The railway infrastructure at Salisbury is owned, operated and maintained by Network Rail, who also employed the signallers at Salisbury signal box. Salisbury Tunnel Junction forms part of Network Rail's Wessex route, which is part of the Southern Region. Train 1L53 was operated by First MTR South Western Trains Ltd, trading as South Western Railway (SWR), who also employed the train's driver and guard. Train 1F30 was operated by First Greater Western Ltd, trading as Great Western Railway (GWR), who also employed that train's driver and guard.

The trains involved Train 1L53 was formed of a single three-coach class 159 diesel multiple unit (DMU), number 159102. Train 1F30 was formed of a pair of two-coach class 158 DMUs, numbers 158762 (leading) and 158763 (trailing). Both trains were built between 1989 and 1992 by BREL at Derby and were of a very similar design.

The full report can be found at :-

https://assets.publishing.service.gov.uk/government/uploads/system/uploads/attachment_data/file/1055846/IR012022_220221_Salisbury_Tunnel_Junction.pdf

Photo right: The down main line near SY31 signal, showing railhead contamination (image courtesy of British Transport Police)

Photo below: Railhead contamination on the down main line near signal SY29R



**Cause:
leaves on the
line.**



Donated OO Gauge Locos & Coaches FOR SALE

Many of the Locos and Coaches were snapped up at the recent open day amid comments that the prices were very reasonable. First to be bought were ex-LMS 4-6-0 'Royal Scot' and ex-GWR 4-6-0 'Pendennis Castle', followed by BR class 35 'Hymek' diesel hydraulic.

Society treasurer Malcolm Jones couldn't resist buying ex-LNER B17 'Footballer' when he realised it was Leeds United!



**Still available
Priced £30 – £50**

BR Britannia 7MT
4-6-2 'Morning Star'
(Photo right)

and

BR9F 2-10-0
'Evening Star'
(Photo left)



45021
ex-LMS 'Black 5'
4-6-0
(Photo left)

Also various Lima Coaches including
Engineers Dept, Restaurant Car and
Full Brake, in a selection of liveries.
All at £10 each (Photo below)



All available from the
Weighbridge Railway Museum
on a Tuesday between 11am – 3pm

or by prior arrangement
email: mail@ludfordpark.plus.com

Jim`s monthly selection of videos.....

This is a film recording the 150th anniversary of the opening of the Stockton & Darlington line in 1825. It was marked by a great cavalcade of locomotives built over the years, featuring 21 in all. Running time 12:23

<https://www.youtube.com/watch?v=LVgDgcM9euk>

Here`s footage of trains running on the Llangollen Railway through some beautiful countryside. There`s no commentary, just plenty of steam engine sights and sounds. Running time 22:47

<https://www.youtube.com/watch?v=ozepvwBUoT4>

To finish, this is Llanidris, an impressive O gauge layout, set in Mid-Wales. It looks like an old film at the start. Running time 10:06

<https://www.youtube.com/watch?v=C35ggvIpoPk>

Member Robert Humphreys sent in a link to a video received from his brother, who had received it from a Californian attorney who migrated to Australia.

“. . . here is a video of a project we've been working on up in Maleny. This video was made over a year ago so there has been some progress since. It's based on the philosophy that it's never too late to have a happy childhood.”

www.youtube.com/watch?v=bGsflio2dh4&t=3s

Robert commented “As the son of the screenwriter of *Some Like It Hot*, he knows something about making movies but not, I`d say, about sound tracking. Still, I thought some BCRS members might be amused by it, or even prompted to start building their own!

Bishop`s Castle Railway Society AGM will be held on Friday 8th April 2022 at 7pm.

It will once again be a Zoom meeting to allow as many members as possible from all over the country to participate. Full details of how to gain access on the night have been included with the AGM Agenda, Directors Nomination Form, Accounts, Annual Reports and any other related documents. All members should have received these documents by the 11th March, either by email if an email address has been provided, or by post if no email address is available.

If you have not received these documents by 11th March please contact the Secretary, Mike Boyd - email: thesecretary.bcr@gmail.com

Follow us on Facebook
<http://bit.ly/2vCUOt8>

www.bcrrailway.co.uk

Registered Company No. 05520291
Registered Charity No. 1111918

If you have an item for the Newsletter
please send to Lin Dalton at
mail@ludfordpark.plus.com
by the 1st of each month

You can opt out of receiving
this newsletter at any time by
emailing:-
mail@ludfordpark.plus.com

For general enquiries
please contact
David O`Neill at
bcrscontact@gmail.com