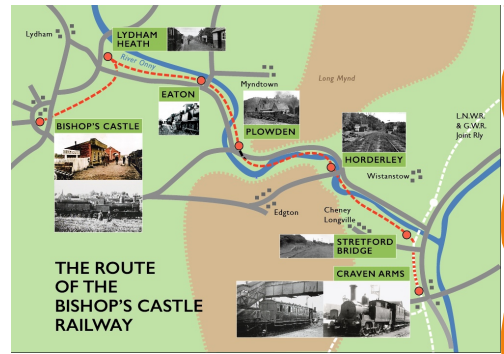


B.C.R.S. October 2020 No. 46 NEWS

The Monthly Newsletter of The
Bishop's Castle Railway Society



OPEN DAY SUCCESS at The Weighbridge Site

Visitors to the Heritage Open Day on the 19th September far exceeded our expectations. The weather was kind to us and just over 100 people toured the building and site during the day. Everyone adhered to the extra precautions put in place to keep visitors safe, which made for a pleasant environment to showcase the work carried out by volunteers during the Summer.



Member Derek Spooner parked his Series 1 Land Rover on the weighbridge to enable visitors to see exactly how the mechanical weighbridge works (photos left and below)

It was good to see so many familiar faces, some who had travelled considerable distances to support us. It was also nice to welcome new visitors, many of whom said they will now follow the progress of the project.



Comments posted on the Heritage Open Days Event webpage included... ..

*"Really great building with enthusiastic people returning it to its former glory
Well worth a visit and donation to help them on their way"*

"What a great project. We were welcomed and able to find out a lot of information about the team's work. I hope they are open next year so we can see the progress."

A big thank you to everyone who helped to make the day possible.....you are now members of the newly formed events team. By next Spring the building will be transformed into a really useable space and it is hoped that a programme of events can be arranged within whatever guidelines are in place at the time.

Lin Dalton Events Coordinator

Weighbridge Project Update



It has been a busy month on site with two deadlines to meet.

On 19th October local plasterer Harry Aldridge starts work on the interior walls and ceiling. The ceiling will be insulated and plaster boarded with a final plaster skim. The walls will have a traditional three coat lime plaster treatment and the whole job is likely to take about 3 weeks.

There has been a last minute push to get all four doors fitted before plastering begins. Not an easy task when working with the original door openings (photo above). Also, the meter board had to be sited before the wall is plastered.

On 9th November Western Power will be on site to trench from the building through the recently acquired triangle of land at the rear of the building to enable a connection to be made at the nearest junction point and bring electricity to the building.

Once these two jobs have been completed, together with the new windows and doors, there will be a warm, comfortable environment for the volunteers to spend the Winter months drinking coffee, eating biscuits and hopefully doing a few jobs!

A lot of progress has been made this year, but also the associated expenditure was depleting the funds. Then a few weeks ago, despite being a charity and not strictly a business, we were invited to apply for a share of surplus funds in the Shropshire Council Covid19 Small Businesses Fund. We were surprised and delighted to receive £5,000, which has boosted the funds and will enable us to start planning for the next stage of the project.

The BCRS 2021 Calendar has sold exceptionally well.

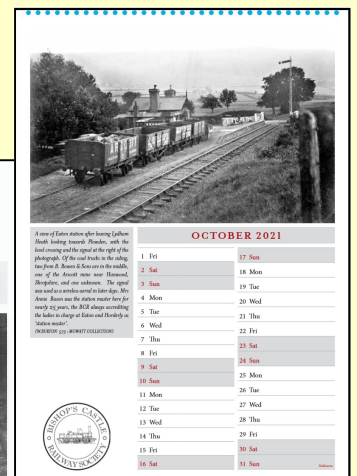
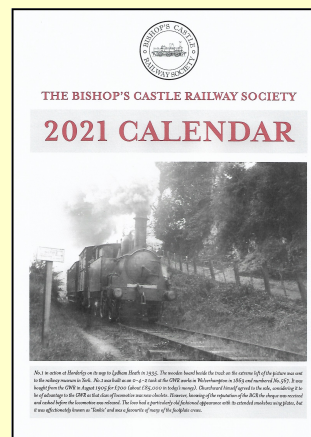
Reserve your copy to avoid disappointment

Only 8 copies left

Email: socialmedia@bcrailway.co.uk

or Phone: 07553 010196

£7.50 collected from the Weighbridge on Tuesdays 10am -2pm
or £9 including p&p



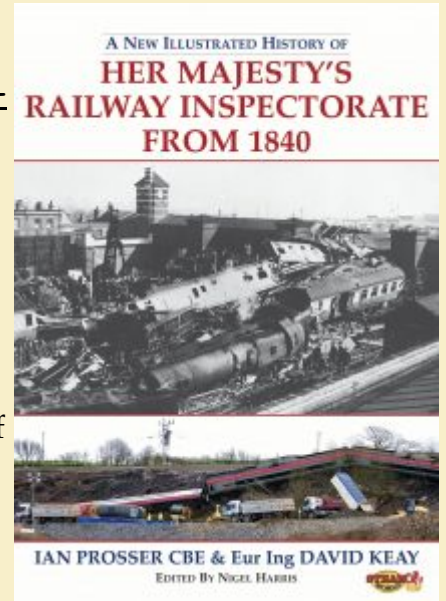
Member Robert Humphreys sent in this

link <https://steamworldmag.co.uk/index.php/her-majestys-railway-inspectorate-from-1840/>

and suggests "This looks like a must read number for members"

Authored by current CHIEF INSPECTOR OF RAILWAYS IAN PROSSER CBE and his retired Deputy, Eur Ing DAVID KEAY...."

Prosser & Keay tell HMRI's important and exciting story - warts and all - from its establishment just ten years after the opening of the Liverpool & Manchester Railway, in 1830, to the end of the second decade of the 21st century. Accidents large and small, infamous and less well known, chronicle and explain the steady progression in railway safety, pressed relentlessly for 180 years by the RI/HMRI.



KEEPING IT IN THE FAMILY

When James Sherratt of Craven Design and Print in Craven Arms was asked to supply a life size replica of the well known Bishop's Castle legend Emmanuel Beddoes, it was a case of keeping it in the family. James, is Emmanuel's great grandson. Whilst Emmanuel was at Craven Print awaiting collection, James and his family were convinced that his eyes followed them around the room. Once he was installed at the weighbridge site we could see what James meant, wherever we stand in the yard, his eyes seem to be following us.



Emmanuel flanked by great grandson James and great great grand daughter Lucy outside Craven Design and Print



Emmanuel stood outside the weighbridge building shows just how big a man he was. His height was 6' 6" (tall for the time), weight 22st 8lb and collar size 19.

The Things I Notice Now John Rimmer Chairman

Elsewhere in this newsletter you can hear about the progress made at the weighbridge and the hard work by a small band of volunteers to get the building ready for internal finishing and the installation of electricity. I really would like to pay tribute to the loyal regulars who combine commitment and an assorted range of skills to getting this project over the finishing line (though it would be interesting to agree a definition of finished!). But we also have many other supporters who contribute in other ways: giving us books and model railway items to sell, buying said books and the spectacularly successful calendar, calling by and being complimentary about what's been done (you cannot underestimate the "warm glow" effect) and those who give that most prized example of support—hard cash.

The September open day delivered on all these fronts; and it was wonderful to greet and meet old friends, to show new visitors what has been done and to feel invigorated by the way the Society has developed in recent years and by its reaction to the present circumstances.

Away from this we've had discussions about gas and gas works, a tantalising insight into an early legal case and more on buttons. Whoever thought retirement would be gentle? (but many of you know that anyway).

To end, I'm sorry to report the death of Graham Lloyd, member No 2 and holder of various offices in the Society who died in September after a short illness. A full appreciation of Graham will appear in the winter edition of the journal, but for now I'll say how much I will miss pulling his leg about his biscuit consumption at meetings and his fund of funny stories and reminiscences.

With apologies to Mike Boyd for cutting short his article in last month's newsletter Can you smell gas?

On the inside surface of the wall, above this fitting (shown right), there are three small wooden blocks mortared into the brickwork. These are at 370mm, 630mm and 1420mm above the current floor surface. They are in a vertical line, and suggest that they may have been where screws could be inserted to affix pipe supports.



The purpose of the pipe is unknown at present, and raises several questions. It does seem very likely that it is a gas supply: the pipe is iron, and lead would probably have been used for water. It approaches from the direction of the nearby gasworks. It has an arrow to show direction of flow. It is not very deep, well within the level to be exposed to frost if it was for water.

The sub-floor fitting also is a mystery: If it was simply to allow connection of a gas appliance, why does it have 'flow' and 'return' openings? Surely a simple Tee fitting would serve. And how could a connection be made; perhaps the 'cover' played a part in that.

It does appear though, that the weighbridge was lit by gas.

Any suggestions, opinions, ideas would be most welcome.

SEVERN VALLEY RAILWAY NEWS

via Stuart Dickinson

Services will operate every weekend and daily during October half-term. You have the choice of five specially tailored return trips:

- The Flyer, steam train, 10.15am-4.25pm - Kidderminster to The Engine House & Bridgnorth. Available on Saturdays, Sundays and throughout half-term
- The Explorer, steam train, 11.00am-5.15pm - Kidderminster to Bridgnorth, with an optional excursion to The Engine House or Bewdley. Available Saturdays.
- The Adventurer, steam train, 11.00am-5.05pm - Bridgnorth to Bewdley or Kidderminster & The Engine House. Available Saturdays, Sundays and throughout half-term.
- (NEW) The Wanderer, steam train, 10.40am-7.40pm - Kidderminster to Bridgnorth return, three times. October 9th, No. 1450 and No. 7714. October 23rd, No. 813 and No. 7714. Available on Fridays.
- The Pioneer, diesel train, 9.45am-6.15pm / 6.45pm - Kidderminster to Bridgnorth return, three times. October 4th, Class 50s. October 9th, Class 42 No. D821. October 18th, Class 40 No. 40106. October 23rd, Class 52 No. D1062 Western Courier and Class 40 No. 40106. Available on Fridays



~~~~~

Santa Trains will run six times a day from Kidderminster to Arley, where passengers will disembark for an all-new, professionally produced Christmas show – Jingle, Jangle and the Christmas Cookbook. Departing from KR on selected dates between 28th November and 24th December. (already 2/3rds fully booked)



The Steam in Lights services will run three times an evening from Bridgnorth to Hampton Loade, and the experience will be hugely enhanced this year, with brand new narration and music during the journey, and the promise that, at the SVR it will snow! Steam in Lights services depart from Bridgnorth on selected dates between 27th November and 23rd December

Please pre-book your tickets online to guarantee travel; tickets are on sale online until 3.30pm the day before travel. Tickets MAY be available on the day, but some trains are already FULLY BOOKED. [svr.co.uk](http://svr.co.uk) 01562 757900

## SVR in Hollywood movie

Enola Holmes, is based on a spin-off series of novels about Sherlock Holmes' younger sister, and has just been released on the Netflix streaming service. The film crew took over the Severn Valley Railway for three intensive days last year.

Starring Millie Bobby Brown, Henry Cavill and Sam Claflin, the film showcases Kidderminster and Arley stations, along with loco 2857 and several vintage carriages, all of which are currently in use on the railway.



## Jim`s monthly selection of videos .....

This is a link to a LMS film showing the huge effort made by the British railway companies and their staff during WW2. Running time 15:26

<https://www.youtube.com/watch?v=3O3t72lvxuU>

Here`s a link to footage of the last days of steam at Oswestry and Gobowen. Pity about the watermark. Running time 1:32

<https://www.youtube.com/watch?v=5QXWI7wIutM>

Here`s Black Five 44871 in trouble and a reminder that the festive season will soon be with us. Running time 20 minutes.

<https://www.youtube.com/watch?v=NObojbTXiaY>

Some vintage adverts for model railways. They were a bit cheaper back then!  
This bit of nostalgia runs for just under 7 minutes.

<https://www.youtube.com/watch?v=bM4uGgchFnM>

BCR tickets continue to sell well on eBay. A First Class Excursion Return ticket from the town to Craven Arms fetched £27 recently whilst a Third Class Return for the same route made £23.37. Both tickets were unused. I believe that, after the railway closed, people could help themselves to tickets as souvenirs as they were considered worthless at the time.

This picture, recently posted on Facebook by Clive Pritchard, has been identified by Peter Broxholme as

No. 1 at Plowden in 1909 with the ex LNWR chain brake stock.

Photographer unknown



Follow us on Facebook <http://bit.ly/2vCUOt8>

[www.bcrailway.co.uk](http://www.bcrailway.co.uk)

### CONTACTS

Chairman : John Rimmer Tel 01588 638998  
email: [john.bcr@outlook.com](mailto:john.bcr@outlook.com)  
Items for the Newsletter: Lin Dalton  
Tel 07553 010 196  
email: [socialmedia@bcrailway.co.uk](mailto:socialmedia@bcrailway.co.uk)

If you would prefer not to receive these updates you can opt out by contacting [socialmedia@bcrailway.co.uk](mailto:socialmedia@bcrailway.co.uk)

THE BISHOP'S CASTLE RAILWAY SOCIETY CO. LTD.

Registered Company Address  
Bishop's Castle Heritage Resource Centre,  
22 Chapel Yard, Bishops Castle SY9 5DE

Registered Company No. 05520291  
Registered Charity No. 1111918